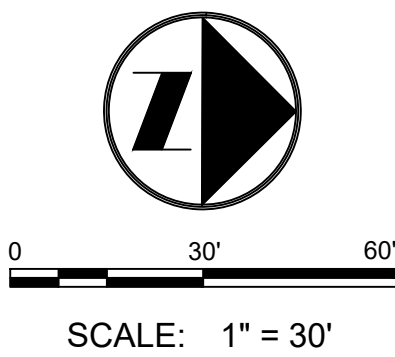
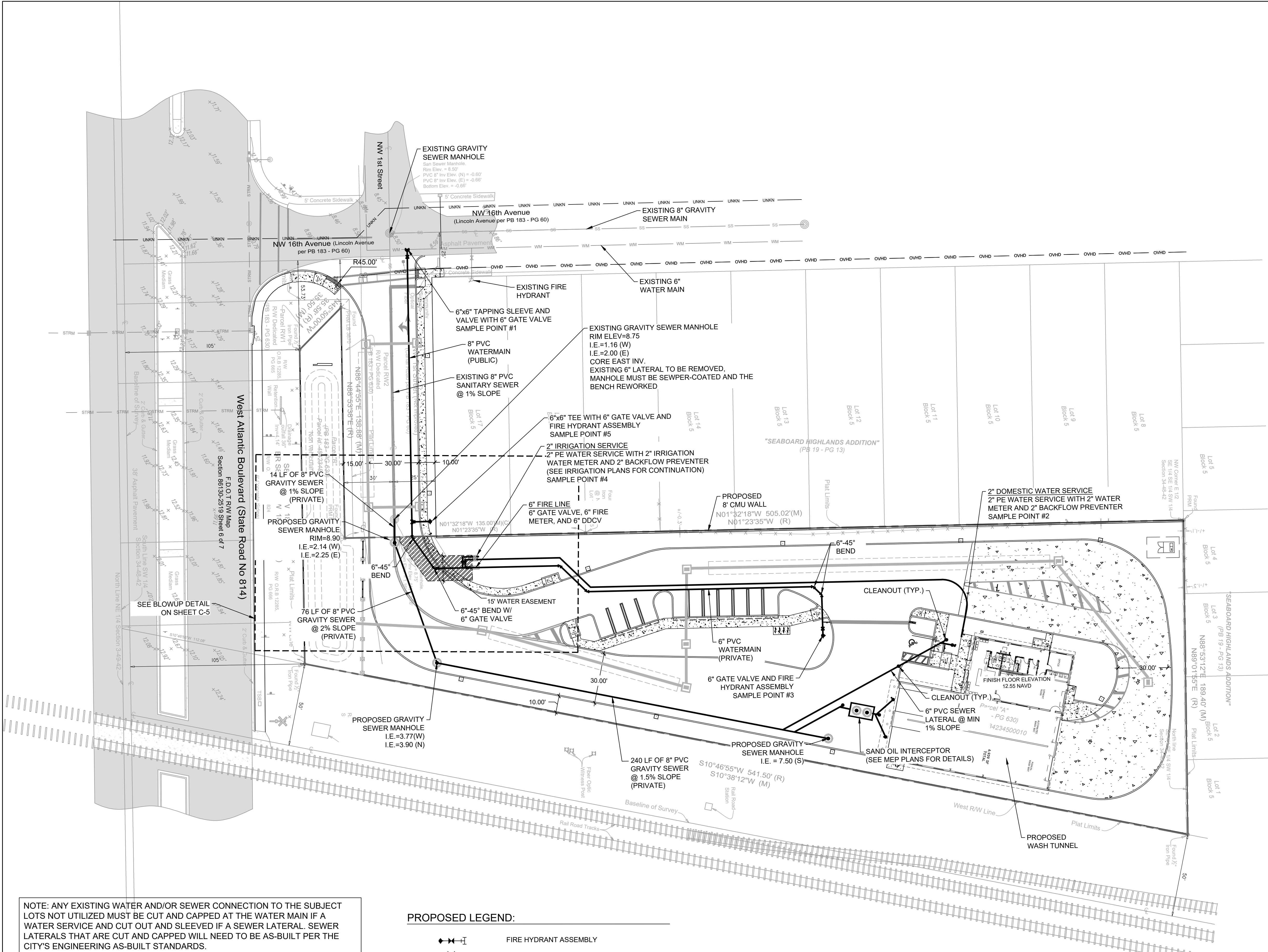


\\ctarline02\Eng\Projects\2024\24-0055-WS.dwg [C-4] Jul 07, 2025 2:40pm TRUBINO



NOTE: ANY EXISTING WATER AND/OR SEWER CONNECTION TO THE SUBJECT LOTS NOT UTILIZED MUST BE CUT AND CAPPED AT THE WATER MAIN IF A WATER SERVICE AND CUT OUT AND SLEEVED IF A SEWER LATERAL. SEWER LATERALS THAT ARE CUT AND CAPPED WILL NEED TO BE AS-BUILT PER THE CITY'S ENGINEERING AS-BUILT STANDARDS.

HOW TO RETIRE OLD LATERALS:

- * IF THE EXISTING MAIN IS A CLAY PIPE AND HAS A CIPP LINER CURRENTLY INSTALLED, INSTALL A SECTIONAL LINER IN THE MAIN OVER THE OLD LATERAL THUS ELIMINATING THE LATERAL.
- * IF THE EXISTING MAIN IS CLAY PIPE, DIG DOWN AND CUT OLD CLAY PIPE, SLEEVE BACK IN WITH PVC AND CITY APPROVED COUPLINGS.
- * IF THE EXISTING MAIN IS CLAY PIPE AND ARE REQUIRED TO RETIRE MULTIPLE LATERALS, IT MAY BE CHEAPER TO INSTALL A CITY APPROVED CIPP LINER FROM MANHOLE TO MANHOLE AND NOT CUT OUT THE LATERALS THAT ARE BEING RETIRED.
- * IF THE EXISTING MAIN IS PVC PIPE, REMOVE THE LATERAL PIPE FROM THE PVC WYE FITTING AND INSTALL A PLUG INTO THE WYE. INSTALL A GREEN LOCATING MARKING BALL AT THE LATERAL LOCATING, NO DEEPER THAN 4 FEET BELOW GRADE.

PROPOSED LEGEND:

	FIRE HYDRANT ASSEMBLY		R.E. =
	GATE VALVE		I.E. =
	WATER METER		SANITARY SEWER MANHOLE
	CORPORATION STOP		CLEANOUT
	REDUCER		SANITARY SEWER PIPE FLOW DIRECTION
	BACKFLOW PREVENTER		SANITARY (SINGLE) SERVICE
	SIAMESE FIRE CONNECTION		SANITARY (DOUBLE) SERVICE
	PLUG		WATER AND SEWER EASEMENT
	VERTICAL DDCV		WATER AND SEWER EASEMENT
	VERTICAL MOUNTED BACKFLOW PREVENTER		WATER AND SEWER EASEMENT
	CONFLICT CALLOUT		WATER AND SEWER EASEMENT

WATER AND SEWER CONSUMPTION

Truck Wash:
300 gallons total per wash with 75% of the water being recycled
75 gallons of water and sewer per wash
150 Trucks serviced daily
Estimated water and sewer usage = 75 gallons per wash x 150 washes per day = 11,250 GPD

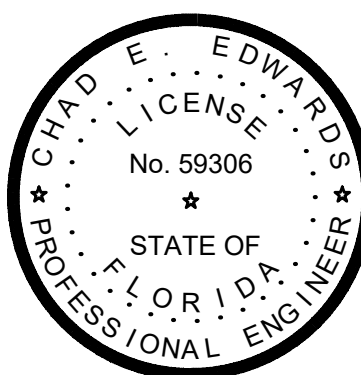
Office:
2,214 SF Office Building
2,214 x 0.212 = 0.469 ERU
0.469 ERU x 257 GPD = 120 GPD

TOTAL ESTIMATED WATER AND SEWER CONSUMPTION = 11,370 GPD

Broward County Water and Wastewater Engineering Division
was utilized for the ERU factor schedule.
1 ERU per 257 GPD
Building: 1,000 SF = 0.212 ERU

WATER AND SEWER NOTES:

- CONTRACTOR SHALL FIELD VERIFY LOCATION, DEPTH, AND SIZE OF ALL EXISTING UTILITIES VIA SOFT DIG PRIOR TO COMMENCEMENT OF INSTALLATION OF THE WATER, SEWER, AND FIRE SERVICES FOR THE SITE. CONTRACTOR SHALL SOFT DIG AT EVERY CROSSING LOCATION.
- ALL WATER MAIN PIPES 4" AND LARGER SHALL BE CLASS 52 MECHANICAL JOINT AND CEMENT MORTAR LINED. ALL D.I.P. SHALL BE POLY WRAPPED IN ACCORDANCE WITH C105/A21.5-05.
- ALL WATER MAIN PIPE, INCLUDING FITTINGS, SHALL BE COLOR CODED OR MARKED BLUE AS A PREDOMINANT COLOR TO DIFFERENTIATE DRINKING WATER FROM RECLAIMED OR OTHER WATER. ALL FITTINGS AND PIPING FLANGED BOLTS, NUTS, AND WASHERS SHALL BE MADE OF A-316 STAINLESS STEEL.
- ALL PROPOSED BACKFLOW DEVICES SHALL BE LEAD FREE.
- THE BACKFLOW PREVENTERS/DDCV ARE LOCATED AT OR BEHIND THE FACADE LINE OR THE BUILDING ON THE APPROVED PLANS AND MUST BE LOCATED AT OR BEHIND THE FRONT OF THE BUILDING ON THE APPROVED PERMITS PLANS, AND CANNOT BE LOCATED IN FRONT OF THE BUILDING.
- ANY EXISTING UNUTILIZED WATER AND/OR SEWER CONNECTION MUST BE CUT AND CAPPED/PLUGGED AT THE MAIN.
- ALL PROPOSED FIRE LINES, I.E., MAINS, FIRE SERVICES, "SIAMESE" CONNECTION LINES ETC. TO BE DESIGNED, PERMITTED, & INSTALLED BY A STATE LICENSED FIRE LINE CONTRACTOR PER F.S. 633.
- ALL FIRE LINES TO BE INSPECTED BY CERTIFIED FIRE LINE INSPECTORS.
- STATE LICENSED FIRE LINE CONTRACTOR, UPON COMPLETION OF REQUIRED TESTING, SHALL ISSUE A "LICENSED UNDERGROUND TEST CERTIFICATE" PRIOR TO ACCEPTANCE FOR PLACING FIRE LINE INTO SERVICE.
- ANY EXISTING WATER SERVICE CONNECTION TO THE SUBJECT LOTS NOT UTILIZED MUST BE CUT AND CAPPED AT THE WATER MAIN.
- ANY EXISTING SEWER LATERAL SERVING THE SUBJECT LOTS NOT UTILIZED MUST BE CUT OUT AND SLEEVED.
- FIRE DEPARTMENT CONNECTION MUST REMAIN CLEAR AND ACCESSIBLE, MINIMUM 3 FEET EACH SIDE AND REAR WITH A MINIMUM 6 FEET CLEAR WIDTH IN FRONT OUT TO ROADWAY FOR FIRE APPARATUS ACCESS.
- UNDERGROUND UTILITY LINES SHALL BE ROUTED AROUND THE TREE PROTECTION AREA WHERE POSSIBLE. IF THIS IS NOT POSSIBLE, A TUNNEL MADE BY A POWER-DRIVEN SOIL AUGER MAY BE USED UNDER THE TREE (AS PER 155.5204.F.3.D).



THE WATER AND SEWER PROVIDER FOR THE PROJECT IS THE CITY OF POMPANO BEACH.

VERTICAL INFORMATION HEREON IS RELATIVE TO THE NORTH AMERICAN VERTICAL DATUM (NAVD88). [NAVD88 = NGVD29 - 1.59']

DATE:	04/30/25	AS SHOWN:	CEE	DESIGN BY:	CEE	DRAWN BY:	TR	CHECKED BY:	CEE	APPROVED BY:	CEE
CRAVEN · THOMPSON AND ASSOCIATES, INC. ENGINEERS · PLANNERS · SURVEYORS 3563 N.W. 53RD STREET, FORT LAUDERDALE, FLORIDA 33309 FAX: (954) 739-6409 TEL: (954) 739-6400 FLORIDA LICENSED ENGINEERS, SURVEYORS & MAPPING BUSINESS NO. 271 FLORIDA LICENSED LANDSCAPE ARCHITECTURE BUSINESS NO. C00014											
1501 WEST ATLANTIC BLVD. POMPANO BEACH, FLORIDA PREPARED FOR: KAJA PROPERTIES INC. WATER & SEWER PLAN											
CHAD E. EDWARDS, P.E. FLORIDA LICENSE NO. 59306 2025-07-07											
PROJECT NO. 24-0055-001-01											
C-4 SHEET 4 OF 14											